



FOR LEASE! • 1,931 SF



BROOKLYN PARK OFFICE

6800 78th Ave N | Brooklyn Park, MN 55445

Great one-story, multi-tenant office building in convenient location

- Perfect for medical/dental or professional office
- Suite 103 (1,149 SF) available April 2025 and Suite 104 (782 SF) available May 2025
- Separate entrance, fantastic windows, and great landscaping
- Parking: 46 stalls (5.94 stalls per 1,000 SF)
- Signage on Brooklyn Blvd
- Right off Brooklyn Blvd between Broadway Ave and Zane Ave; Easy access to 694, Hwy 169, County Rd 81, and 85th Ave N

Net Rent: \$12-\$16 • Est. Operating Expenses: TBD

Brian Potratz
612-269-7401

[**brian@CEGspaces.com**](mailto:brian@CEGspaces.com)

Jeff Salzbrun
612-428-3333

[**jeff@CEGspaces.com**](mailto:jeff@CEGspaces.com)

Nicole Langer
612-554-6208

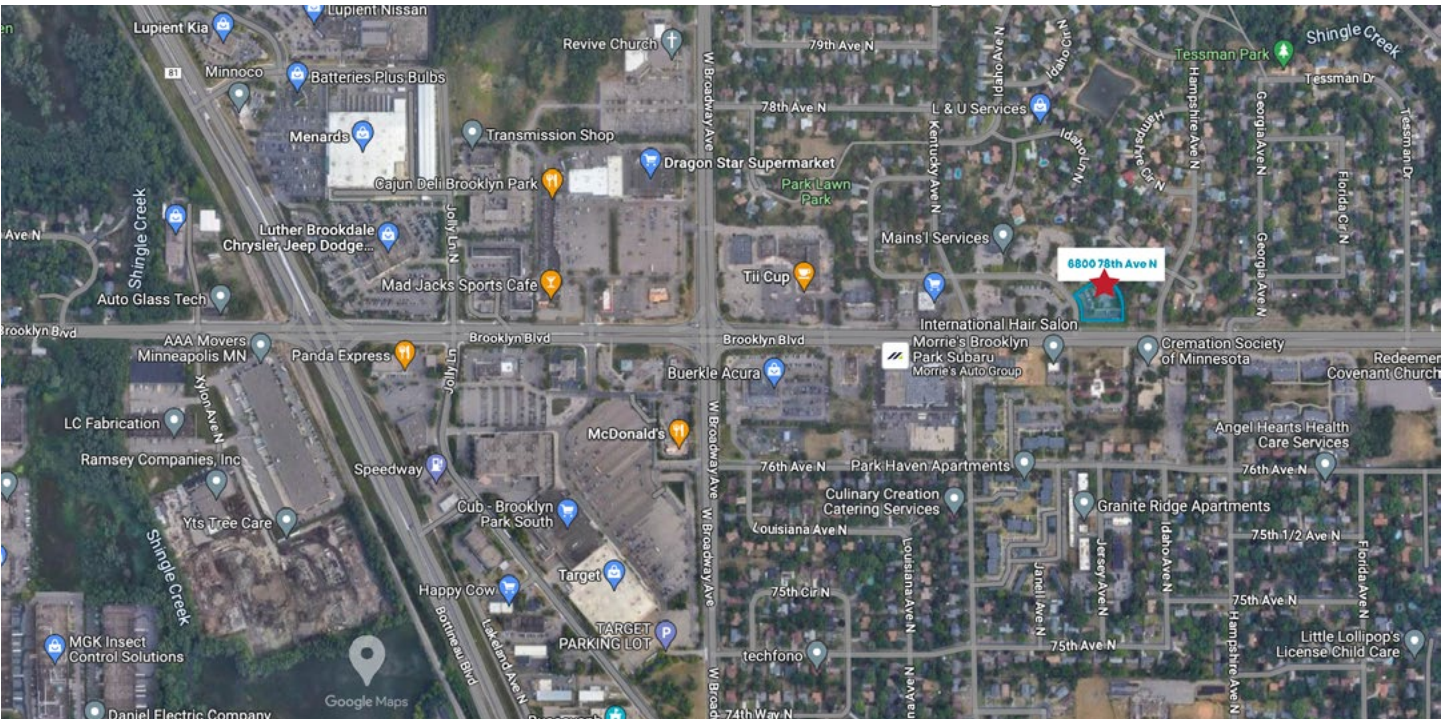
[**nicole@cegspaces.com**](mailto:nicole@cegspaces.com)

[**CEGspaces.com/bp-office**](https://CEGspaces.com/bp-office)

[**GO TO MAP**](#)

Commercial Equities Group
— Investment Real Estate Services

Fabulous Location • Ample Parking



BP OFFICE • 1,931 SF
6800 78th Ave N | Brooklyn Park MN 55445
Brian Potratz | 612-269-7401 | brian@CEGspaces.com

Well-Maintained • Great Medical Office

