



FOR LEASE! • 1,684 SF



RICE STREET OFFICE/RETAIL

842 Rice Street | St. Paul, MN 55117

Newly renovated mixed use building with prime visibility on corner lot

- Fabulous storefront or office space next to Jackson Hewitt Tax Service
- White box until use is determined; build out negotiable
- Tall ceilings and large windows for bright open space
- New mechanicals and updated restrooms
- Off street (12 stalls, .86/1,000 SF) and street parking
- T2 zoning, mixed residential/commercial
- Traffic signal on corner for more visibility
- At the corner of Atwater Street W and Rice between Como Avenue and 35E

Base Rent: \$14 PSF • Est. Operating Expenses: TBD

Shannon Farrand

512-619-7454

shannon@CEGspaces.com

Jeff Salzbrun

612-428-3333

jeff@CEGspaces.com

Nicole Langer

612-554-6208

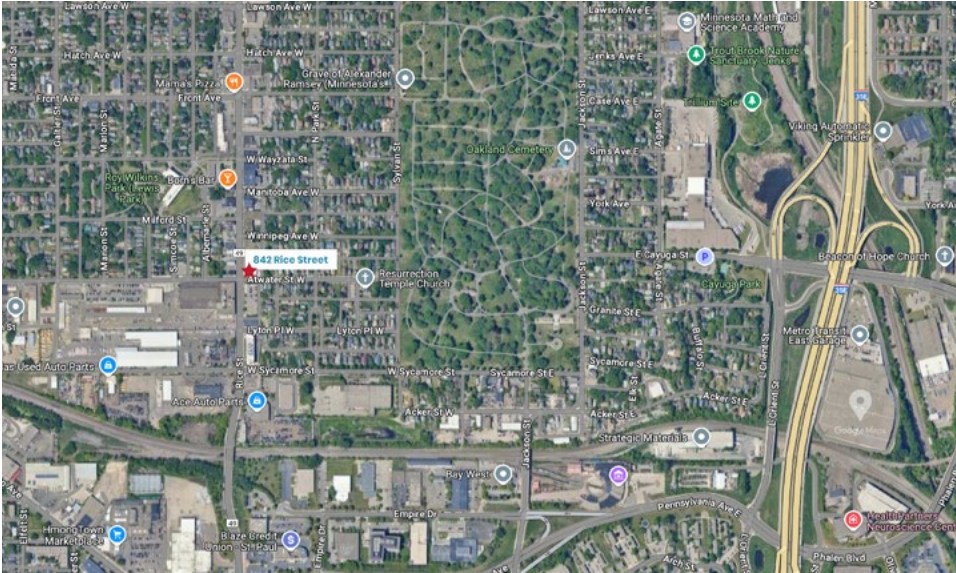
nicole@cegspaces.com

CEGspaces.com/rice

[GO TO MAP](#)

Commercial Equities Group
— Investment Real Estate Services

Highly Visible Location • Newly Renovated



RICE STREET OFFICE/RETAIL • 1,684 SF
842 Rice Street | St. Paul, MN 55117

Shannon Farrand | 512-619-7454 | shannon@CEGspaces.com